

# HV Cable Installation

Installation & Commissioning





# Replacement of Damaged HV Cable

Thames Water Utilities, ITX003 Transformer, Mogden STW

**Client:** Thames Water Utilities

**Location:** ITX003 Transformer, Mogden STW, Isleworth

**Project:** Replacement of Damaged Cable

## Scope of Works

- Installation & Commissioning of temporary HV cables
- Installation of new permanent HV cable
- Installation of new containment
- Commissioning of new HV cable



## The Task

Power Testing Ltd were asked to attend site due to a cable fault on the secondary side of a critical transformer. This left a major part of the site on single circuit risk.

As a temporary measure, Power testing Ltd efficiently installed a temporary feed on the secondary side of the transformer, to allow the site to have the expected resilience, whilst a new cable installation was designed.

New cables were to be installed, using a different cable route to prevent the same cable fault occurring in the future. New containment was installed and existing containment was used. A cable pulling specialist was used to pull the cables into place efficiently and neatly.

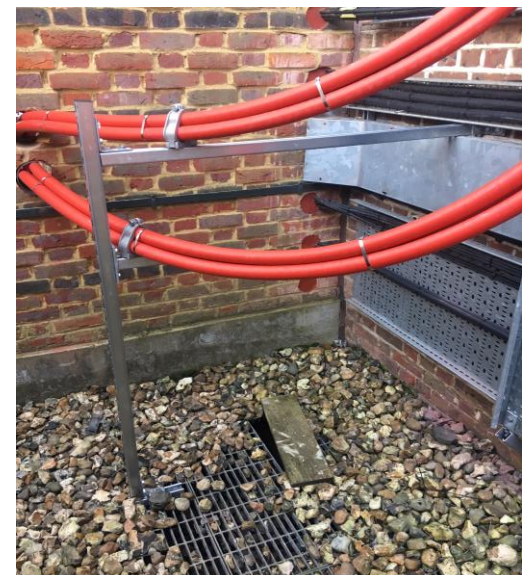
Upon completion of the installation, the newly installed cables were tested and commissioned before being energized.



**The client was delighted that this critical project was delivered free of risk and the finished works were extremely neat.**

## Project Achievements

- Worked closely with the client to minimize operational risks & disruption to the site.
- Careful planning and coordination to ensure shutdowns were kept to a minimum.
- Efficient project management involving third parties.
- Successful transfer of supplies from the Damaged Cable to the New HV Cable.
- Identification and mitigation of project risks.
- Safe cable containment, pulling and installation.
- Plant movement / disposal.
- Timescales and deadlines met
- Reacted immediately to ensure a temporary supply was in place whilst the new install plans were put together.



**Power Testing Ltd** 33 Hanbury Road, Widford Ind. Est. Chelmsford, Essex CM1 3AE

t: 01245 266 800 f: 01245 265 229 w: [powertesting.co.uk](http://powertesting.co.uk)